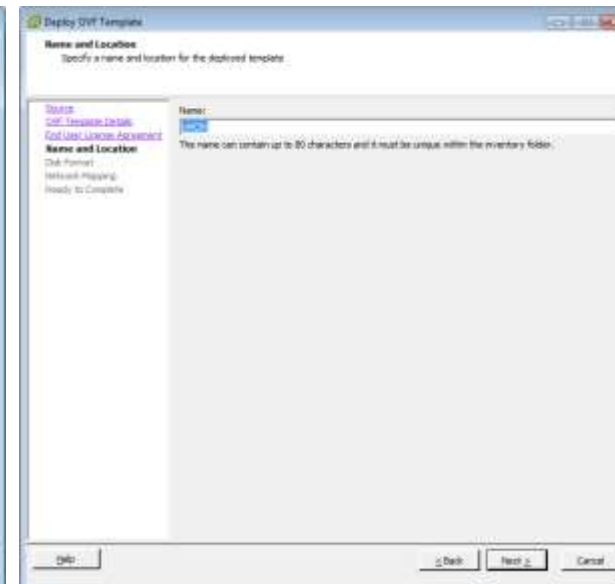
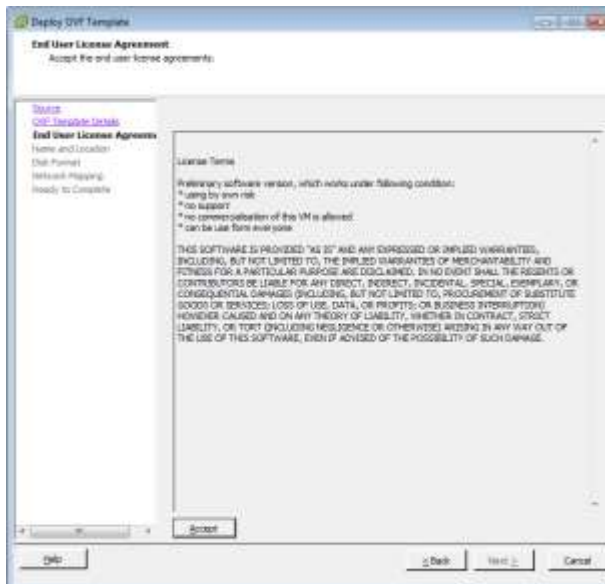
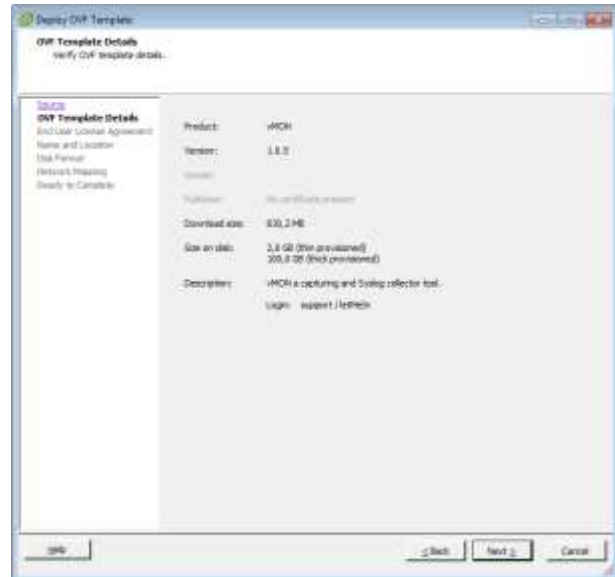
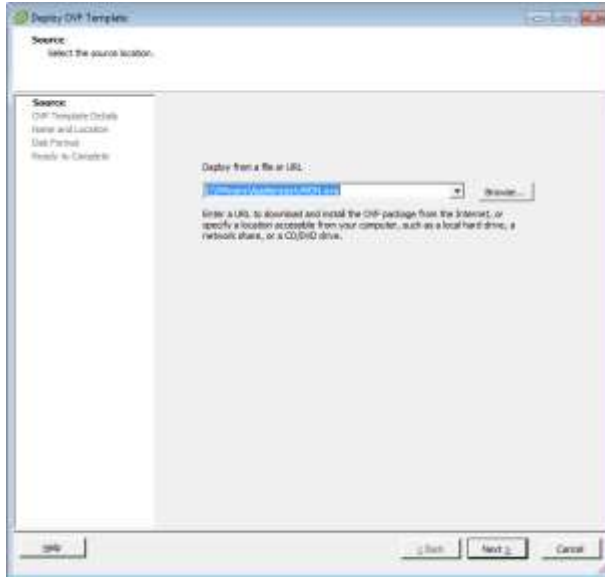
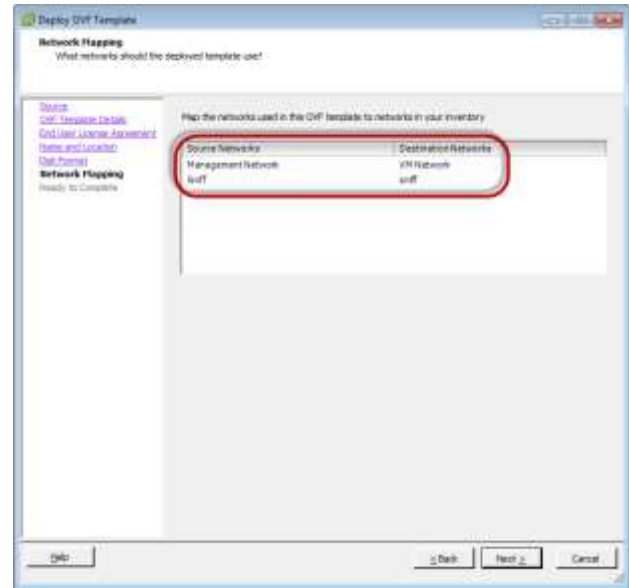
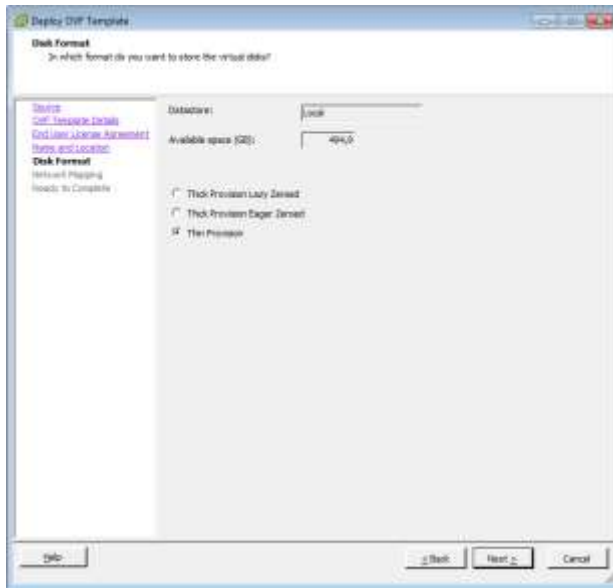


How to use vMON

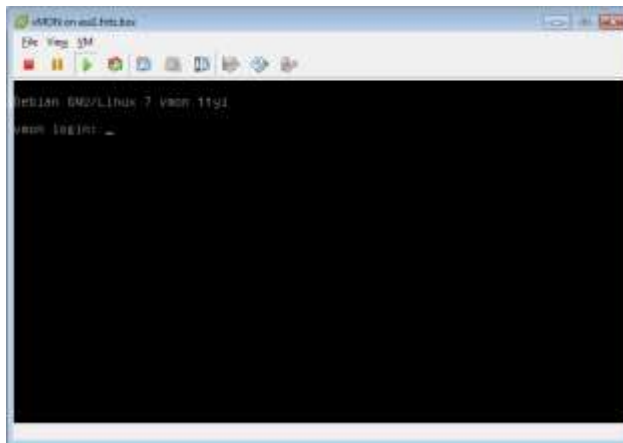
is a Virtual Machine (VM) for troubleshooting propose. He provides a simple WEB interface to run capturing in hypervisor environment like VMware, HyperV, KVM, Virtual Box, One interface is for control the VM by WEB. The other one for capture traffic only and has no IP, bridge or anything else assigned to avoid any influence in the hypervisor as well to keep the capture clean. Long-term capturing with file rollover is possible up to 90 GB file size. In addition is a syslog server collect any inbound syslog messages.

1. import vMON.ova to ESXi 5.x





2. boot vMON and assign a IP address



login: support / letMeln

